



**ATTENTION**  
 This drawing is prepared for the sole use of CITY OF COURTENAY  
 No representations of any kind are made by Urban Systems Ltd. or its employees  
 to any party with whom Urban Systems Ltd. does not have a contract.

**WARNING**  
 Utilities or structures shown on this drawing were compiled from information  
 supplied by various parties and may not be complete or accurate. Expose and  
 conclusively confirm the location in the field all underground utilities and structures  
 indicated on this drawing. all underground utilities in the area of the proposed work  
 and any utilities or structures reasonably apparent from an inspection of the  
 proposed work. Urban Systems Ltd. assumes no responsibility for loss or damage  
 caused by third party negligence or failure to comply with the above.

**SURVEY INFORMATION**  
 Prepared by: 3D GEOMATICS  
 Coordinate System: NAD 83 UTM ZONE 10  
 Compilation Date: 2022-12-09

**ISSUED FOR DISCUSSION**  
 2022-12-21  
 urbansystems.ca

Professional Seals

| # | Date       | Issue / Revision      | App |
|---|------------|-----------------------|-----|
| A | 2022-12-21 | ISSUED FOR DISCUSSION | MS  |
|   |            |                       |     |
|   |            |                       |     |
|   |            |                       |     |
|   |            |                       |     |
|   |            |                       |     |
|   |            |                       |     |

|  |
|--|
|  |
|--|

**URBAN SYSTEMS**

Scale: 1:250H 0 5 10m  
 1:25V 0 0.5 1m

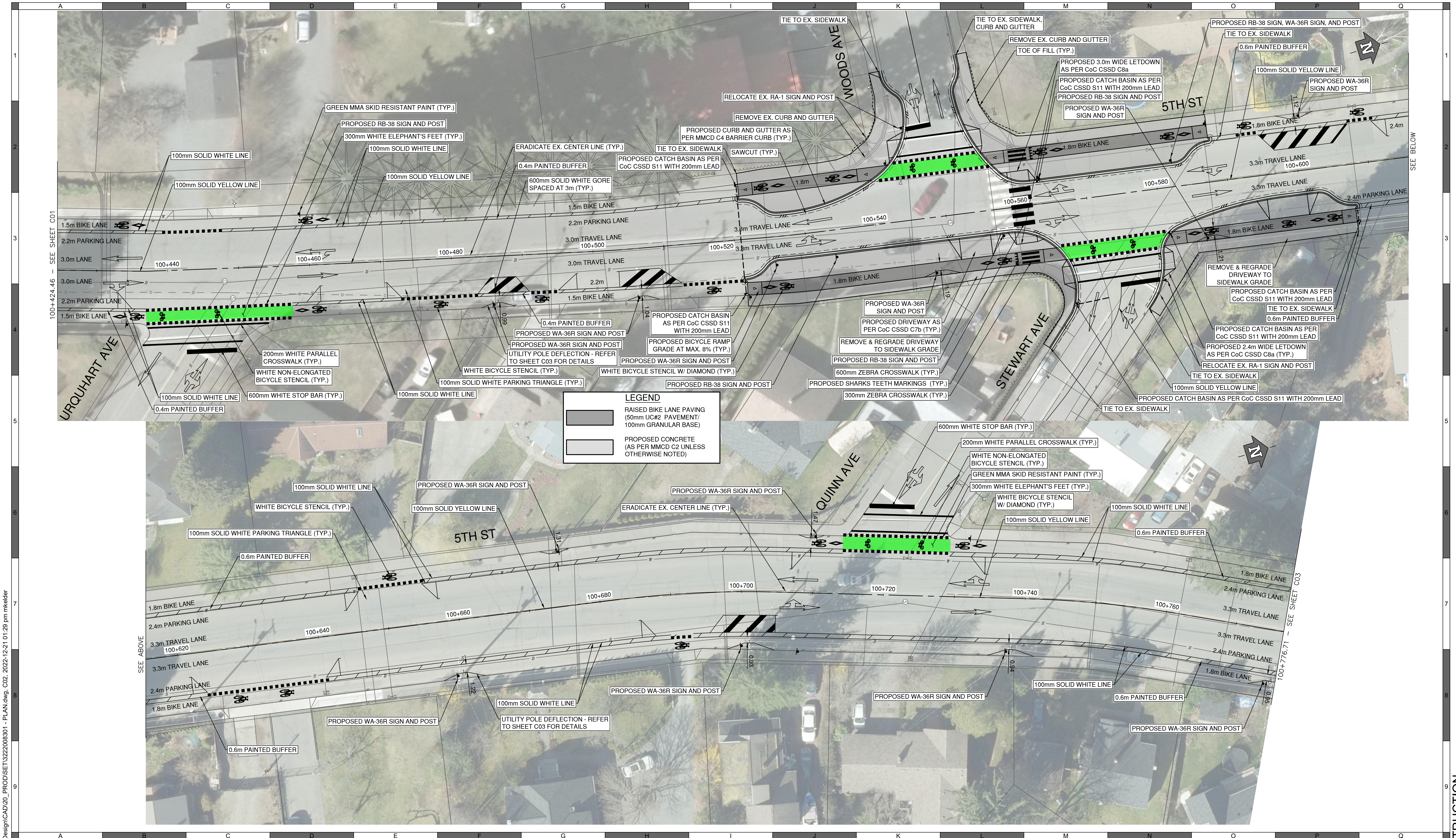
Quality Control by: M. SALLEE  
 Designed by: M. KELDER  
 Drawn by: M. KELDER

**5TH STREET BIKEWAY**  
 PLAN

Sheet Number: 1 of 5  
 Project Number: 3222.0083.01  
 Drawing Number: C01  
 Revision: A

ANSI expand D (34.00 x 22.00 inches) 25mm

NOT FOR CONSTRUCTION



**ATTENTION**  
 This drawing is prepared for the sole use of CITY OF COURTNAY  
 No representations of any kind are made by Urban Systems Ltd. or its employees  
 to any party with whom Urban Systems Ltd. does not have a contract.

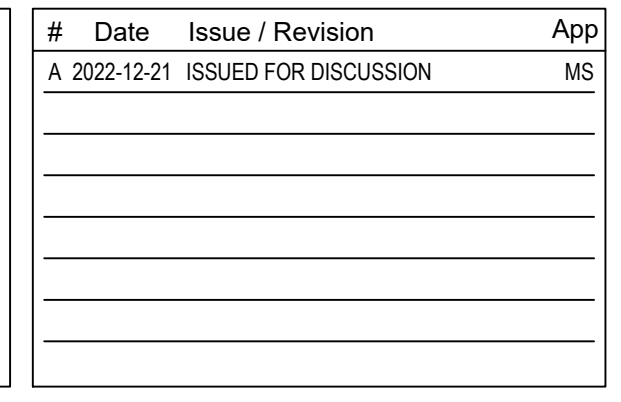
**WARNING**  
 Utilities or structures shown on this drawing were compiled from information  
 supplied by various parties and may not be complete or accurate. Expose and  
 conclusively confirm the location in the field all underground utilities and structures  
 indicated on this drawing, all underground utilities in the area of the proposed work  
 and any utilities or structures reasonably apparent from an inspection of the  
 proposed work. Urban Systems Ltd. assumes no responsibility for loss or damage  
 caused by third party negligence or failure to comply with the above.

**SURVEY INFORMATION**  
 Prepared by: 3D GEOMATICS  
 Coordinate System: NAD 83 UTM ZONE 10  
 Compilation Date: 2022-10-09

**ISSUED FOR DISCUSSION**  
 2022-12-21  
 urbansystems.ca

Professional Seals

| # | Date       | Issue / Revision      | App |
|---|------------|-----------------------|-----|
| A | 2022-12-21 | ISSUED FOR DISCUSSION | MS  |
|   |            |                       |     |
|   |            |                       |     |
|   |            |                       |     |
|   |            |                       |     |



Scale: 1:250H 0 5 10m  
 1:25V 0 0.5 1m

Quality Control by: M. SALLEE  
 Designed by: M. KELDER  
 Drawn by: M. KELDER

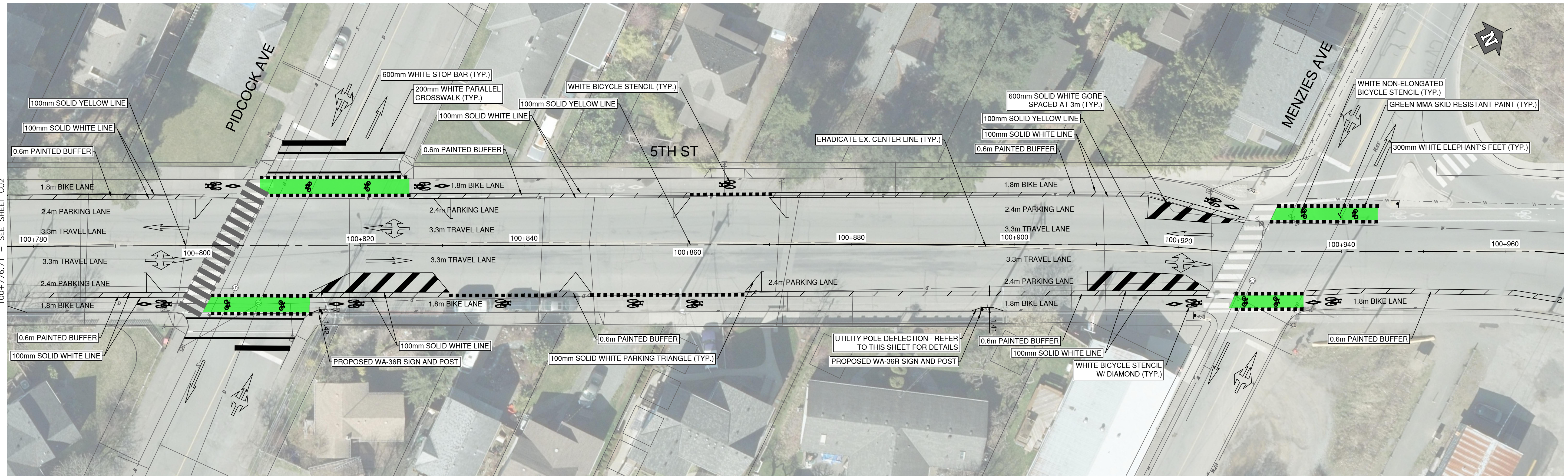
**URBAN SYSTEMS**

**5TH STREET BIKEWAY PLAN**

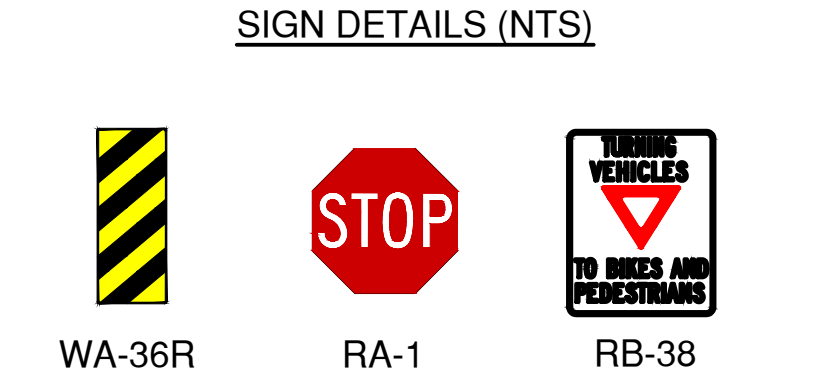
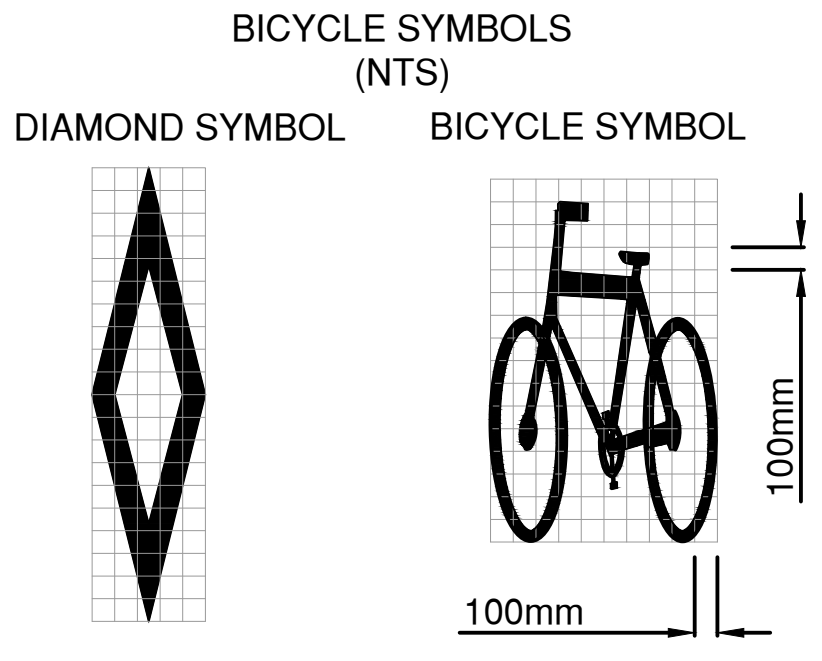
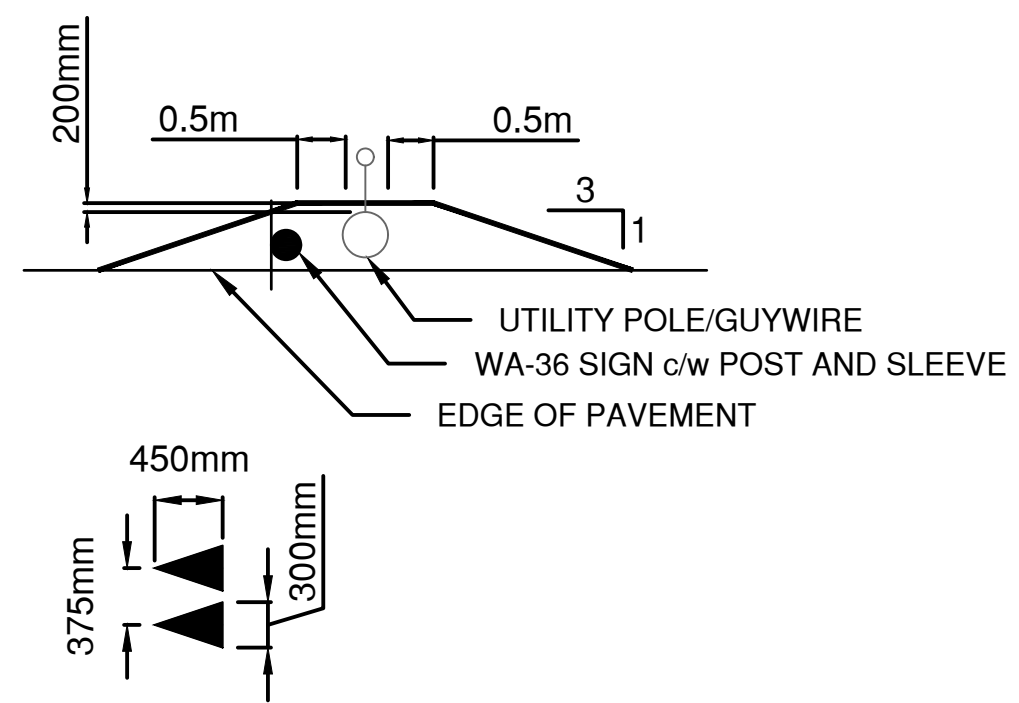
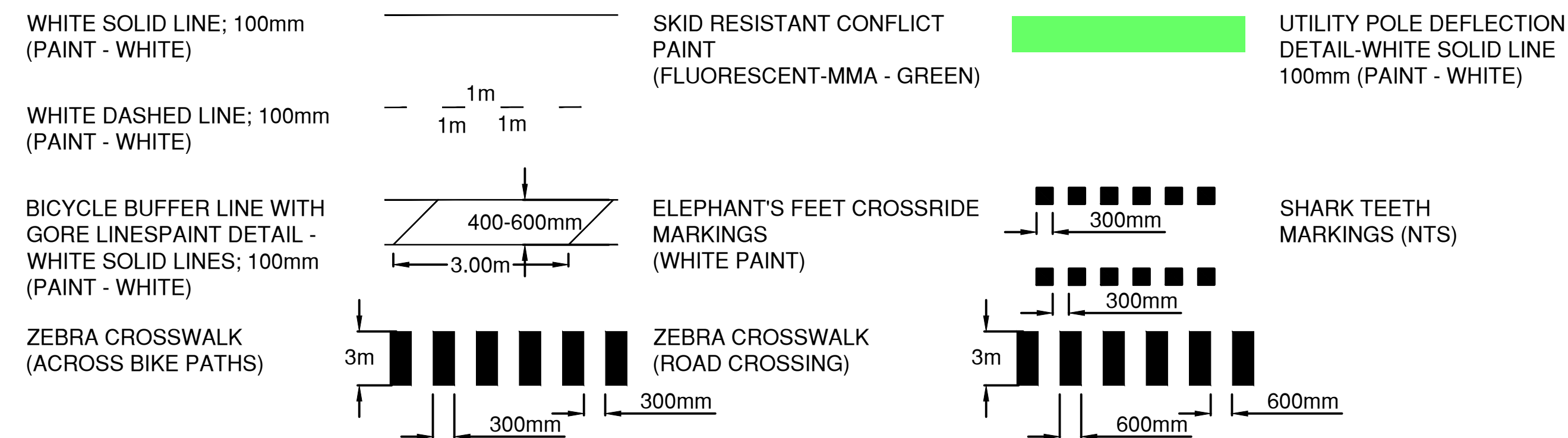
Sheet Number: 2 of 5  
 Project Number: 3222.0083.01  
 Drawing Number: C02  
 Revision: A

U:\Projects\_CTY\3222\0083\01\1D-Design\CAD\20\_PROD\SET\3222008301 - PLAN.dwg, CO2, 2022-12-21 01:29 pm mkelder

**NOT FOR CONSTRUCTION**



**LEGEND**



U:\Projects\_CTY\3222\0683\11D-Design\CAD\20\_PROD\SET\3222008301 - PLAN.dwg, CO3, 2022-12-21 01:29 pm mkelder

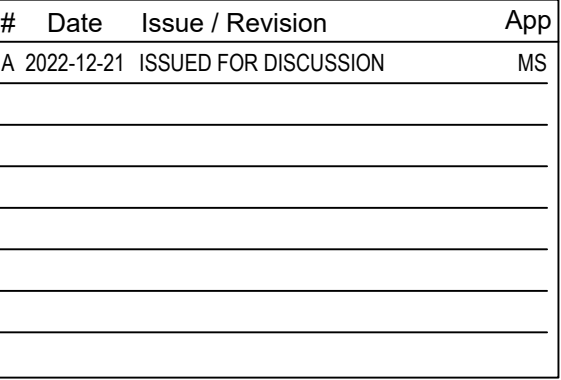
**ATTENTION**  
This drawing is prepared for the sole use of CITY OF COURTENAY  
No representations of any kind are made by Urban Systems Ltd. or its employees to any party with whom Urban Systems Ltd. does not have a contract.  
**WARNING**  
Utilities or structures shown on this drawing were compiled from information supplied by various parties and may not be complete or accurate. Expose and conclusively confirm the location in the field all underground utilities and structures indicated on this drawing. all underground utilities in the area of the proposed work and any utilities or structures reasonably apparent from an inspection of the proposed work. Urban Systems Ltd. assumes no responsibility for loss or damage caused by third party negligence or failure to comply with the above.

**SURVEY INFORMATION**  
Prepared by: 3D GEOMATICS  
Coordinate System: NAD 83 UTM ZONE 10  
Compilation Date: 2022-12-09

**ISSUED FOR DISCUSSION**  
2022-12-21  
urbansystems.ca

Professional Seals

| # | Date       | Issue / Revision      | App |
|---|------------|-----------------------|-----|
| A | 2022-12-21 | ISSUED FOR DISCUSSION | MS  |
|   |            |                       |     |
|   |            |                       |     |
|   |            |                       |     |
|   |            |                       |     |



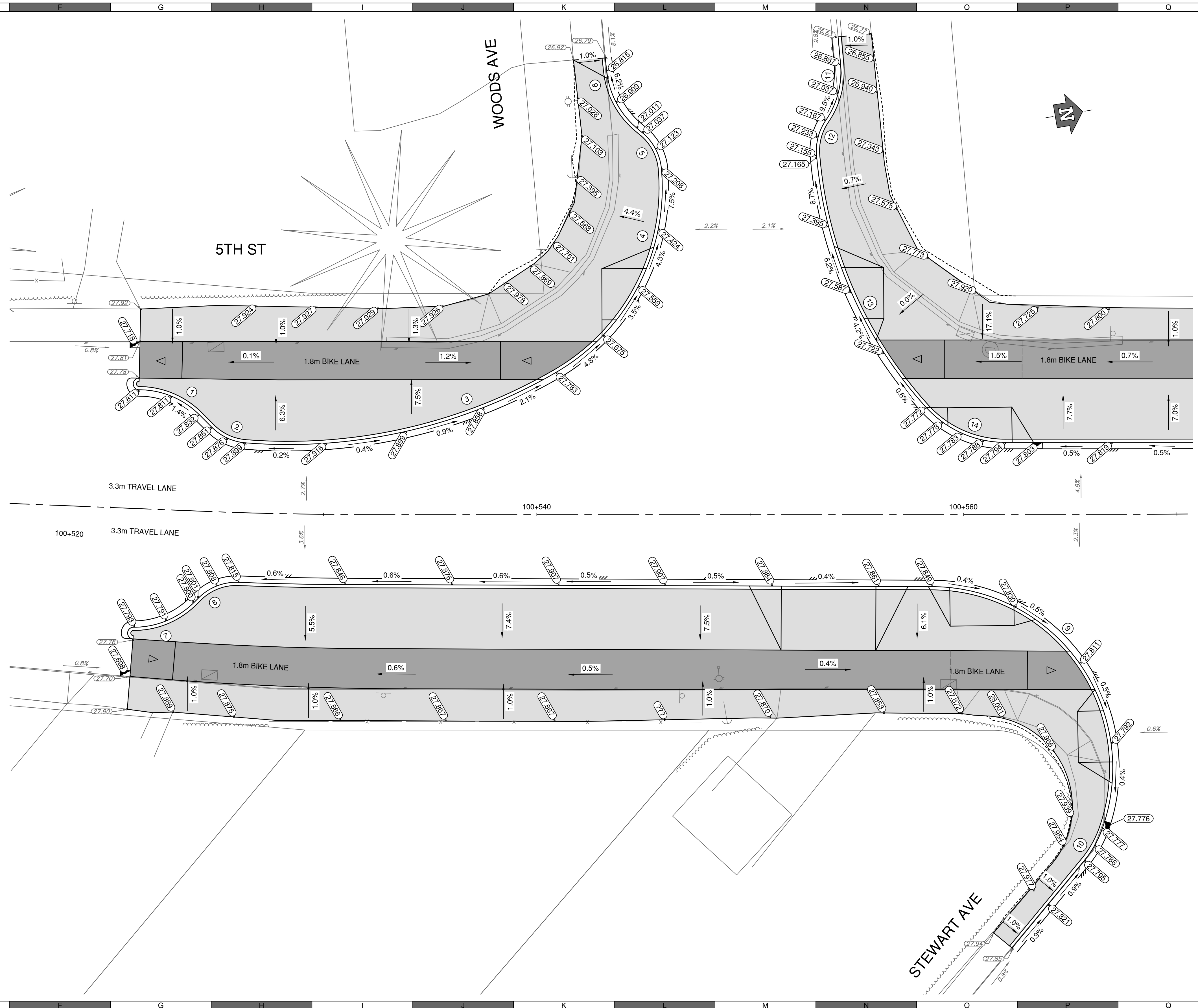
**URBAN SYSTEMS**  
Scale: 1:250H 0 5 10m  
1:25V 0 0.5 1m  
Quality Control by: M. SALLEE  
Designed by: M. KELDER  
Drawn by: M. KELDER

**5TH STREET BIKEWAY**  
PLAN

|                |              |
|----------------|--------------|
| Sheet Number   | 3 of 5       |
| Project Number | 3222.0083.01 |
| Drawing Number | C03          |
| Revision       | A            |

**NOT FOR CONSTRUCTION**

U:\Projects\_CTY\3222\0083\01\1D-Design\CAD\20\_PROD\SET\3222\008301 - SPOTS.dwg, C04 - 2022-12-21 10:14:00 pm mkelder



| CURVE 1                        | CURVE 2                       | CURVE 3                       | CURVE 4                       | CURVE 5                       | CURVE 6                       | CURVE 7                       |
|--------------------------------|-------------------------------|-------------------------------|-------------------------------|-------------------------------|-------------------------------|-------------------------------|
| R 4.000<br>Δ 45°00'00"         | R 2.500<br>Δ 40°22'12"        | R 25.000<br>Δ 34°43'52"       | R 10.000<br>Δ 64°54'36"       | R 2.500<br>Δ 45°00'00"        | R 4.000<br>Δ 44°55'13"        | R 4.000<br>Δ 44°45'13"        |
| Tc 1.657<br>Arc 3.142          | Tc 0.919<br>Arc 1.761         | Tc 7.818<br>Arc 15.154        | Tc 6.360<br>Arc 11.329        | Tc 1.036<br>Arc 1.963         | Tc 1.654<br>Arc 3.136         | Tc 1.647<br>Arc 3.124         |
| CENTER                         |                               |                               |                               |                               |                               |                               |
| N 5505432.906<br>E 3550447.915 | N 5505438.689<br>E 355044.831 | N 5505444.200<br>E 355023.016 | N 5505449.466<br>E 355037.061 | N 5505456.943<br>E 355037.655 | N 5505461.683<br>E 355033.172 | N 5505432.147<br>E 355050.963 |
| BC                             |                               |                               |                               |                               |                               |                               |
| N 5505436.164<br>E 355045.595  | N 5505438.077<br>E 355047.255 | N 5505452.977<br>E 355046.425 | N 5505459.435<br>E 355037.852 | N 5505458.845<br>E 355036.032 | N 5505457.675<br>E 355032.862 | N 5505434.453<br>E 355054.231 |
| EC                             |                               |                               |                               |                               |                               |                               |
| N 5505433.569<br>E 355043.970  | N 5505436.653<br>E 355046.281 | N 5505438.077<br>E 355047.255 | N 5505452.977<br>E 355046.425 | N 5505459.435<br>E 355037.852 | N 5505458.620<br>E 355035.768 | N 5505431.483<br>E 355054.908 |

| CURVE 8                       | CURVE 9                       | CURVE 10                      | CURVE 11                      | CURVE 12                      | CURVE 13                      | CURVE 14                      |
|-------------------------------|-------------------------------|-------------------------------|-------------------------------|-------------------------------|-------------------------------|-------------------------------|
| R 2.500<br>Δ 46°59'11"        | R 8.500<br>Δ 109°10'53"       | R 5.000<br>Δ 20°07'31"        | R 4.000<br>Δ 39°44'23"        | R 2.500<br>Δ 39°44'23"        | R 20.000<br>Δ 37°14'46"       | R 5.000<br>Δ 47°44'21"        |
| Tc 1.087<br>Arc 2.050         | Tc 11.957<br>Arc 16.197       | Tc 0.887<br>Arc 1.756         | Tc 1.446<br>Arc 2.774         | Tc 0.903<br>Arc 1.734         | Tc 6.740<br>Arc 13.001        | Tc 2.213<br>Arc 4.166         |
| CENTER                        |                               |                               |                               |                               |                               |                               |
| N 5505436.151<br>E 355056.093 | N 5505467.235<br>E 355067.634 | N 5505470.297<br>E 355069.330 | N 5505464.544<br>E 355034.093 | N 5505469.205<br>E 355038.624 | N 5505486.640<br>E 355040.128 | N 5505474.019<br>E 355048.234 |
| BC                            |                               |                               |                               |                               |                               |                               |
| N 5505436.661<br>E 355053.646 | N 5505474.671<br>E 355071.752 | N 5505473.571<br>E 355073.109 | N 5505467.412<br>E 355036.881 | N 5505466.712<br>E 355038.430 | N 5505469.812<br>E 355050.936 | N 5505473.189<br>E 355053.164 |
| EC                            |                               |                               |                               |                               |                               |                               |
| N 5505434.709<br>E 355054.050 | N 5505468.681<br>E 355059.258 | N 5505474.671<br>E 355071.752 | N 5505468.532<br>E 355034.404 | N 5505467.412<br>E 355036.881 | N 5505466.703<br>E 355038.546 | N 5505469.812<br>E 355050.936 |

**ATTENTION**  
This drawing is prepared for the sole use of CITY OF COURTENAY  
No representations of any kind are made by Urban Systems Ltd. or its employees to any party with whom Urban Systems Ltd. does not have a contract.

**WARNING**  
Utilities or structures shown on this drawing were compiled from information supplied by various parties and may not be complete or accurate. Expose and conclusively confirm the location in the field all underground utilities and structures indicated on this drawing, all underground utilities in the area of the proposed work and any utilities or structures reasonably apparent from an inspection of the proposed work. Urban Systems Ltd. assumes no responsibility for loss or damage caused by third party negligence or failure to comply with the above.

**SURVEY INFORMATION**  
Prepared by: 3D GEOMATICS  
Coordinate System: NAD 83 UTM ZONE 10  
Compilation Date: 2022-12-09

**ISSUED FOR DISCUSSION**  
2022-12-21  
urbansystems.ca

Professional Seals

| # | Date       | Issue / Revision      | App |
|---|------------|-----------------------|-----|
| A | 2022-12-21 | ISSUED FOR DISCUSSION | MS  |



**URBAN SYSTEMS**

Scale  
1:100

Quality Control by  
Designed by  
Drawn by

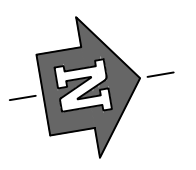
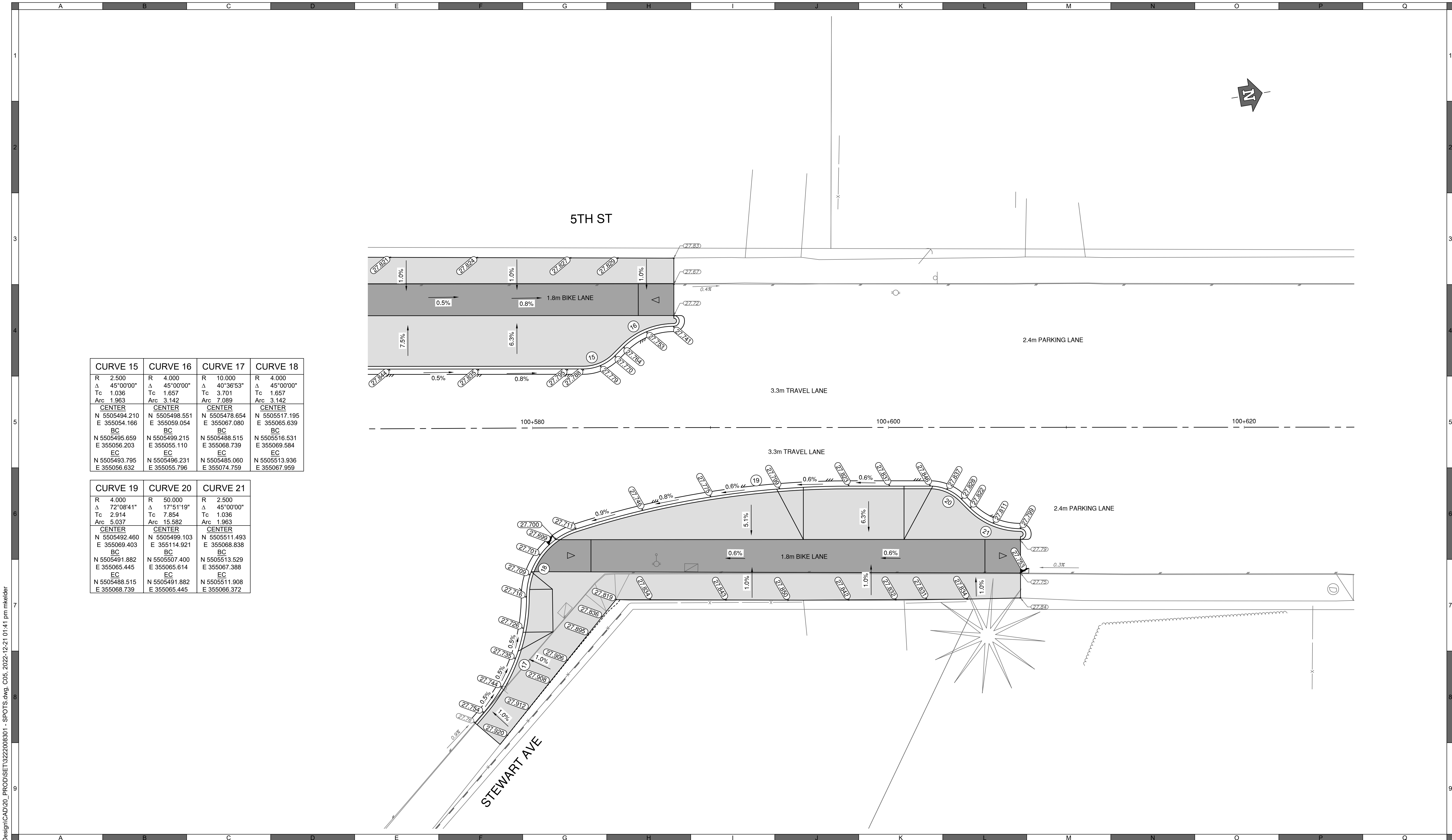
M. SALLEE  
M. KELDER  
M. KELDER

**5TH STREET BIKEWAY INTERSECTION BLOWUP**

Sheet Number 4 of 5  
Project Number 3222.0083.01  
Drawing Number C04  
Revision A

ANSI expand D (34.00 x 22.00 Inches) 25mm

**NOT FOR CONSTRUCTION**



| CURVE 15      | CURVE 16      | CURVE 17      | CURVE 18      |
|---------------|---------------|---------------|---------------|
| R 2.500       | R 4.000       | R 10.000      | R 4.000       |
| Δ 45°00'00"   | Δ 45°00'00"   | Δ 40°36'53"   | Δ 45°00'00"   |
| Tc 1.036      | Tc 1.657      | Tc 3.701      | Tc 1.657      |
| Arc 1.963     | Arc 3.142     | Arc 7.089     | Arc 3.142     |
| <b>CENTER</b> | <b>CENTER</b> | <b>CENTER</b> | <b>CENTER</b> |
| N 5505494.210 | N 5505498.551 | N 5505478.654 | N 5505517.195 |
| E 355054.166  | E 355059.054  | E 355067.080  | E 355065.639  |
| BC            | BC            | BC            | BC            |
| N 5505495.659 | N 5505499.215 | N 5505488.515 | N 5505516.531 |
| E 355056.203  | E 355055.110  | E 355068.739  | E 355069.584  |
| EC            | EC            | EC            | EC            |
| N 5505493.795 | N 5505496.231 | N 5505485.060 | N 5505513.936 |
| E 355056.632  | E 355055.796  | E 355074.759  | E 355067.959  |

| CURVE 19      | CURVE 20      | CURVE 21      |
|---------------|---------------|---------------|
| R 4.000       | R 50.000      | R 2.500       |
| Δ 72°08'41"   | Δ 17°51'19"   | Δ 45°00'00"   |
| Tc 2.914      | Tc 7.854      | Tc 1.036      |
| Arc 5.037     | Arc 15.582    | Arc 1.963     |
| <b>CENTER</b> | <b>CENTER</b> | <b>CENTER</b> |
| N 5505492.460 | N 5505499.103 | N 5505511.493 |
| E 355069.403  | E 355114.921  | E 355068.838  |
| BC            | BC            | BC            |
| N 5505491.882 | N 5505507.400 | N 5505513.529 |
| E 355065.445  | E 355065.614  | E 355067.388  |
| EC            | EC            | EC            |
| N 5505488.515 | N 5505491.882 | N 5505511.908 |
| E 355068.739  | E 355065.445  | E 355066.372  |

U:\Projects\_CTY\3222\0683\1\10-Design\CAD\20\_PROD\SET\3222\068301 - SPOTS.dwg, C05, 2022-12-21 01:41 pm mkelder

NOT FOR CONSTRUCTION

**ATTENTION**  
 This drawing is prepared for the sole use of CITY OF COURTENAY  
 No representations of any kind are made by Urban Systems Ltd. or its employees to any party with whom Urban Systems Ltd. does not have a contract.  
**WARNING**  
 Utilities or structures shown on this drawing were compiled from information supplied by various parties and may not be complete or accurate. Expose and conclusively confirm the location in the field all underground utilities and structures indicated on this drawing. All underground utilities in the area of the proposed work and any utilities or structures reasonably apparent from an inspection of the proposed work. Urban Systems Ltd. assumes no responsibility for loss or damage caused by third party negligence or failure to comply with the above.

**SURVEY INFORMATION**  
 Prepared by: 3D GEOMATICS  
 Coordinate System: NAD 83 UTM ZONE 10  
 Compilation Date: 2022-12-09

**ISSUED FOR DISCUSSION**  
 2022-12-21  
 urbansystems.ca

Professional Seals

| # | Date       | Issue / Revision      | App |
|---|------------|-----------------------|-----|
| A | 2022-12-21 | ISSUED FOR DISCUSSION | MS  |



**URBAN SYSTEMS**

Scale: 1:100  
 0 2 4m

Quality Control by: M. SALLEE  
 Designed by: M. KELDER  
 Drawn by: M. KELDER

| 5TH STREET BIKEWAY INTERSECTION BLOWUP |                |
|--|----------------|
| Sheet Number                           | 5 of 5         |
| Project Number                         | Drawing Number |
| 3222.0083.01                           | C05            |
| Revision                               | A              |