

REVISIONS:	DATE	BY	CHKD.

www.t3pmhousing.com

LETHBRIDGE AB, CANADA
BUS. (403) 320-8588

Triple M Housing

REF# DR#23537

TITLE: FLOOR PLAN (STD)

DATE: 2022-10-17

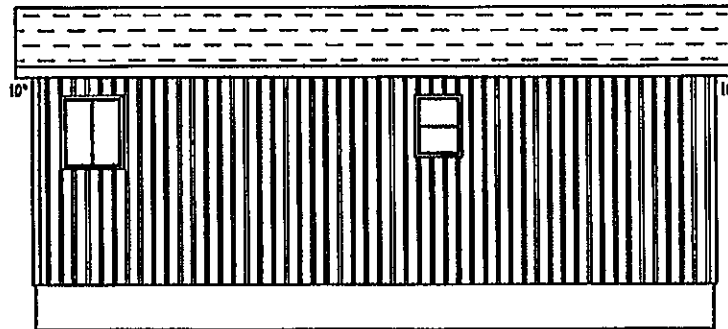
SCALE: 3/16" = 1'-0"

DWG. NO. QV-1620-22

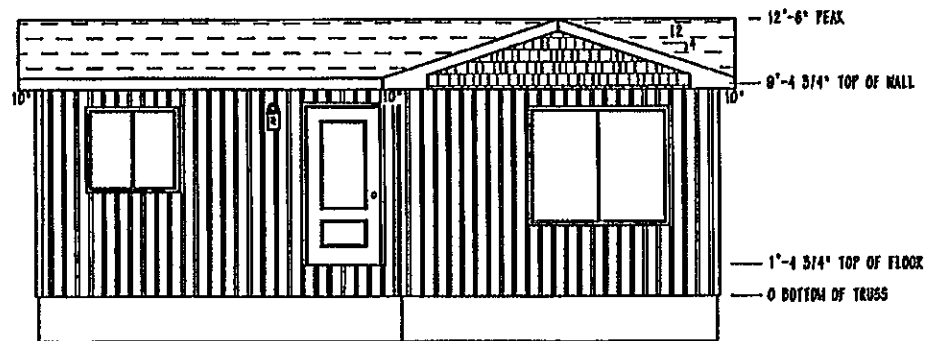
DWN. SAJ

CKD.

SHEET P1

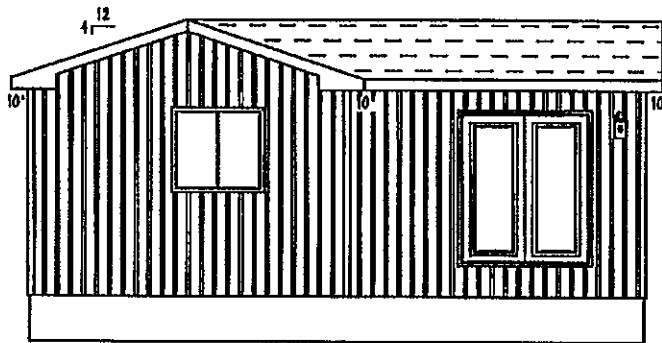


REAR ELEVATION
SCALE: 5/16"=1'-0"

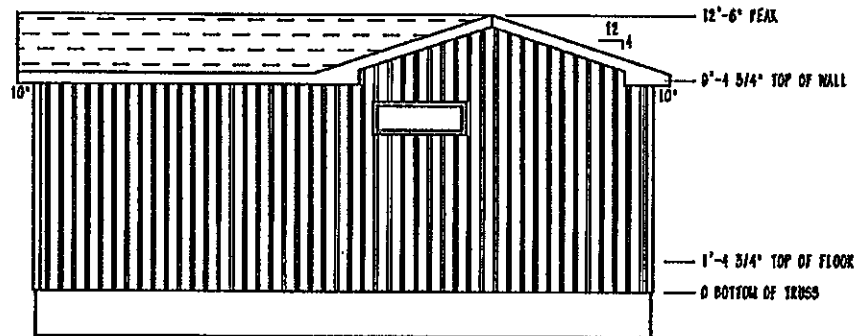


FRONT ELEVATION
SCALE: 5/16"=1'-0"

REVISIONS:						
www.triplem.com			LETHBRIDGE, AB CANADA 403 (416) 269-4344		DR#23537	
 Triple M Housing			TITLE: ELEVATIONS (STD)		DATE: 2022-10-17	
			SCALE: AS NOTED		DWG. BY: G.A.J.	
			PROJ. NO. QV-1620-22		SHEET: P2	

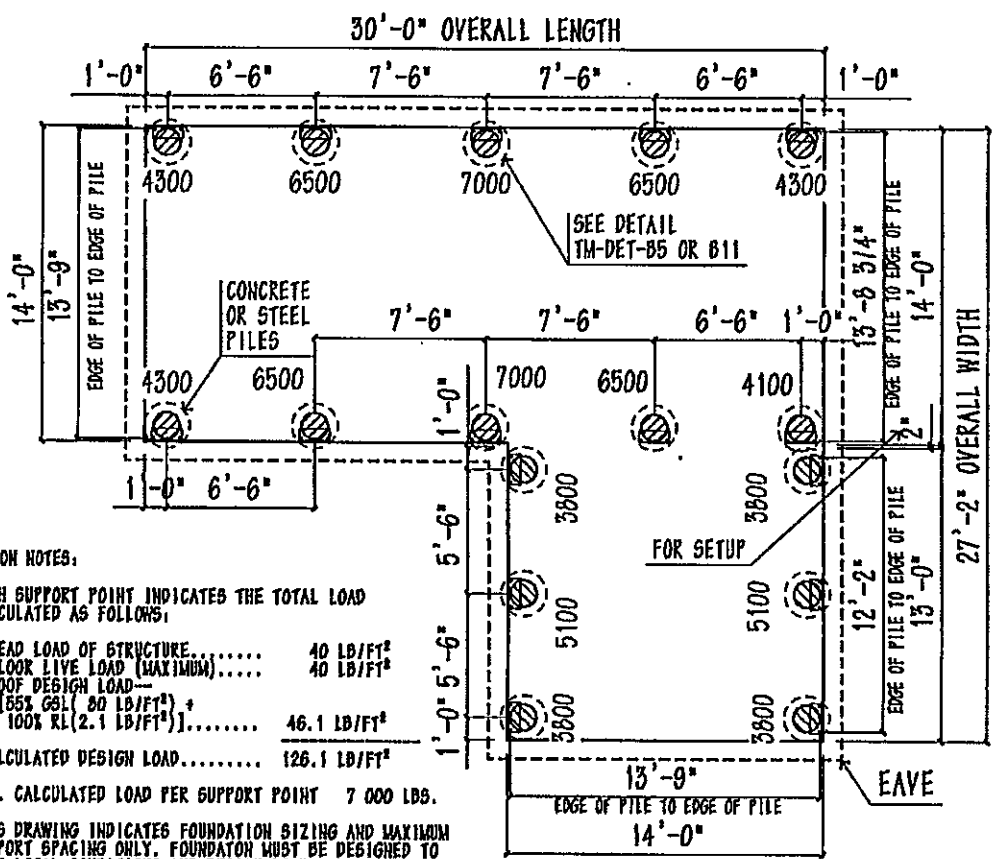


LEFT ELEVATION
SCALE: 3/16"=1'-0"



RIGHT ELEVATION
SCALE: 3/16"=1'-0"

REVISIONS:				
	www.triplehousing.com	LETHBRIDGE, AL CANADA EQB (403) 940-8558	REF# DR#23537	
	 Triple M Housing		TITLE: ELEVATIONS (STD)	
			DATE: 2023-10-17	DWN. B.A.J.
			SCALE: AS NOTED	
			DWG. NO. QV-1620-22	
				P3



FOUNDATION NOTES:

- [1]. EACH SUPPORT POINT INDICATES THE TOTAL LOAD CALCULATED AS FOLLOWS:

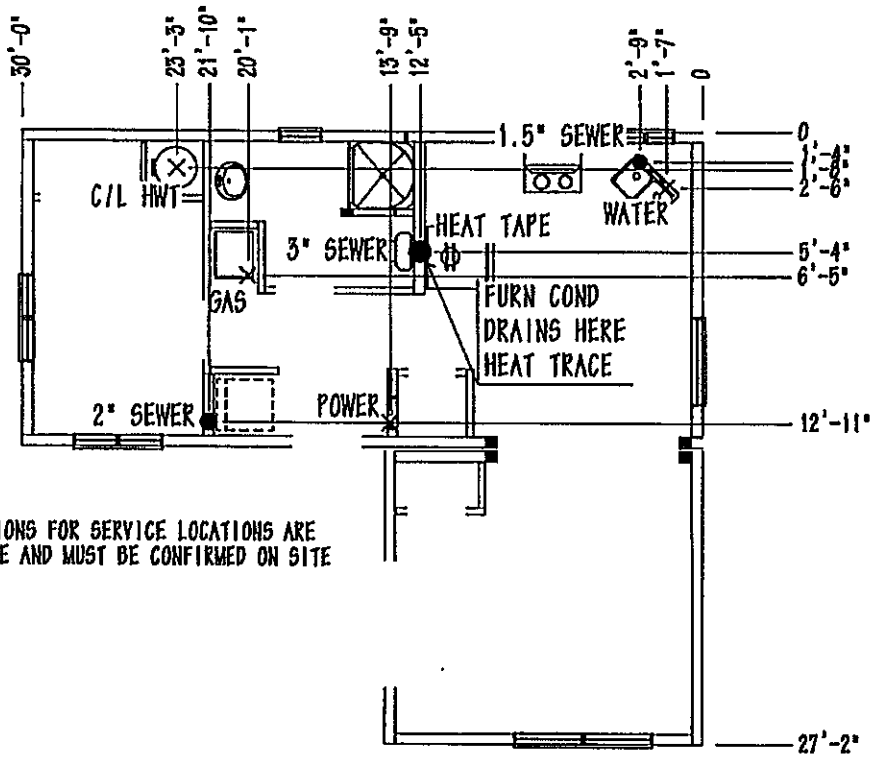
DEAD LOAD OF STRUCTURE.....	40 LB/FT ²
FLOOR LIVE LOAD (MAXIMUM).....	40 LB/FT ²
ROOF DESIGN LOAD—	
[85% GL (80 LB/FT ²) +	
100% RL (2.1 LB/FT ²)]......	46.1 LB/FT ²
CALCULATED DESIGN LOAD.....	126.1 LB/FT²
- [2]. MAX. CALCULATED LOAD PER SUPPORT POINT 7 000 LBS.

- [3]. THIS DRAWING INDICATES FOUNDATION SIZING AND MAXIMUM SUPPORT SPACING ONLY. FOUNDATION MUST BE DESIGNED TO SUIT LOCAL CONDITIONS AND DESIGN LOADS SHOWN.
- [4]. BLOCKING AND TIE-DOWNS MUST CONFORM TO THE REQUIREMENTS OF CSA-2240.10.1-16 SITE PREPARATION, FOUNDATION, AND ANCHORAGE OF MOBILE AND MODULAR HOMES.

- [5]. PROVIDE COMPACT GRAVEL BASE IF WOOD SUPPORT BLOCKING IS USED.
- [6]. ALL MATERIALS AND DESIGN CRITERIA MUST CONFORM WITH PART 9 OF THE APPLICABLE BUILDING CODE.
- [7]. ALL LOADS ARE UNFACTORED.

REVISIONS:	NO.	DESCRIPTION

<p style="font-size: small;">www.tyintesting.com</p> <p style="text-align: center;">Triple M Housing</p> <p style="font-size: x-small;">LEHRIDGE, AB, CANADA 812 (403) 242-4558</p>	<p style="text-align: right;">DR#23537</p> <p>TITLE: FOUNDATION LAYOUT (STD)</p> <p style="font-size: x-small;">DATE: 2022-10-17 DWN: BAJ</p> <p style="font-size: x-small;">SCALE: 5/16"=1'-0" CED.</p> <p style="font-size: x-small;">DWS. NO. QV-1620-22</p>	<p style="font-size: x-small;">SHEET</p> <p>P7</p>
--	---	---



*DIMENSIONS FOR SERVICE LOCATIONS ARE APPROXIMATE AND MUST BE CONFIRMED ON SITE

- NOTE:
- *EXTEND HOT WATER TANK FRESH AIR VENT AT OPENING IN FLOOR AT THE HOT WATER TANK CAVITY (GAS HWT ONLY)
 - *TERMINATE HOT WATER TANK DRAIN LINE - CONNECTION WILL BE ABOVE BELLY BAG

REVISIONS					
www.triplemhousing.com		LETHBRIDGE, AL CANADA PH: (403) 563-8300	DR# 23537		
 Triple M Housing		TITLE: SERVICE DWG (STD)			
		DATE: 2022-10-17	DWN. G.A.J	SHEET	
		SCALE: 3/16"=1'-0"	CKD.		
		DWG. NO. QV-1620-22	P 10		