

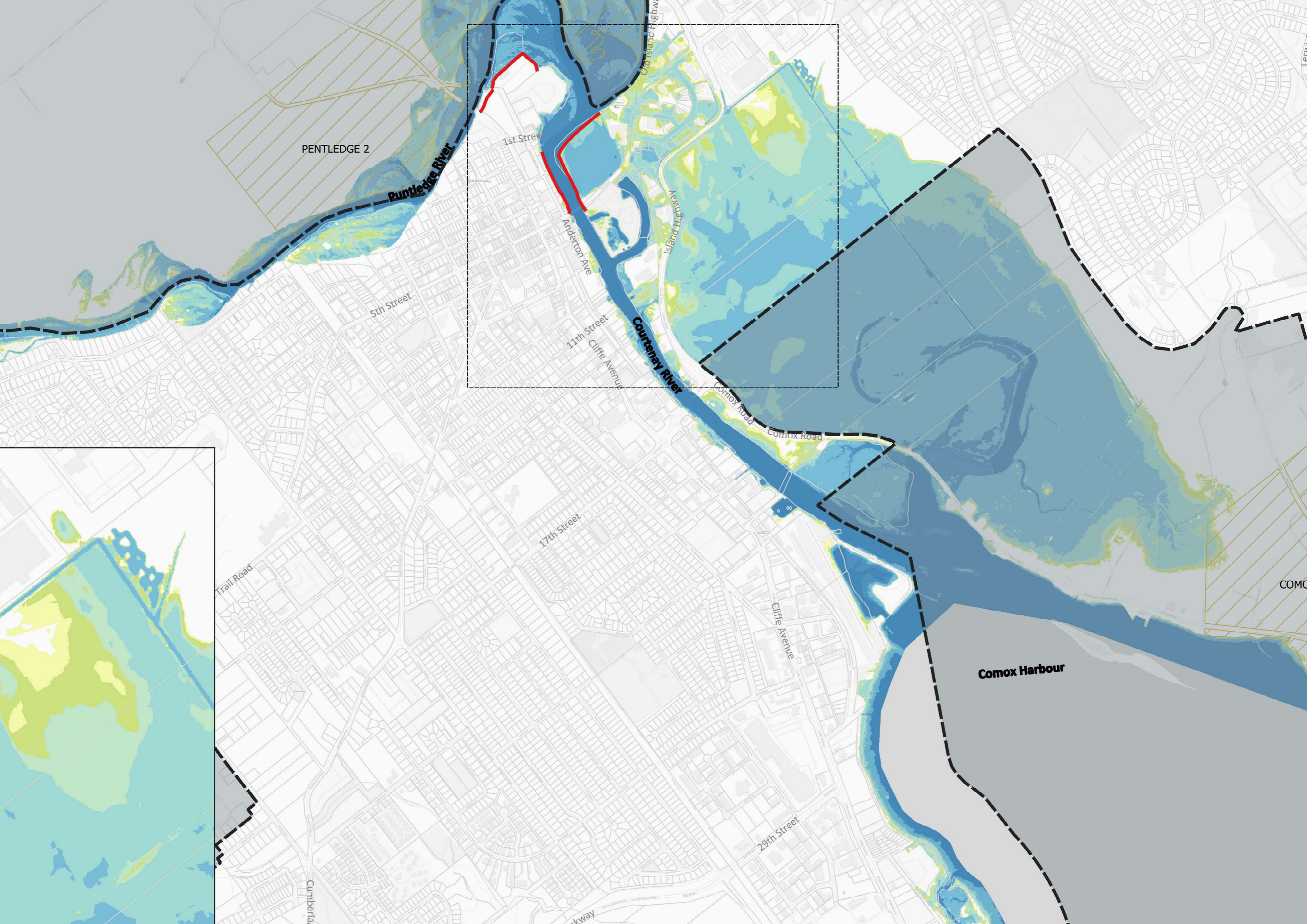


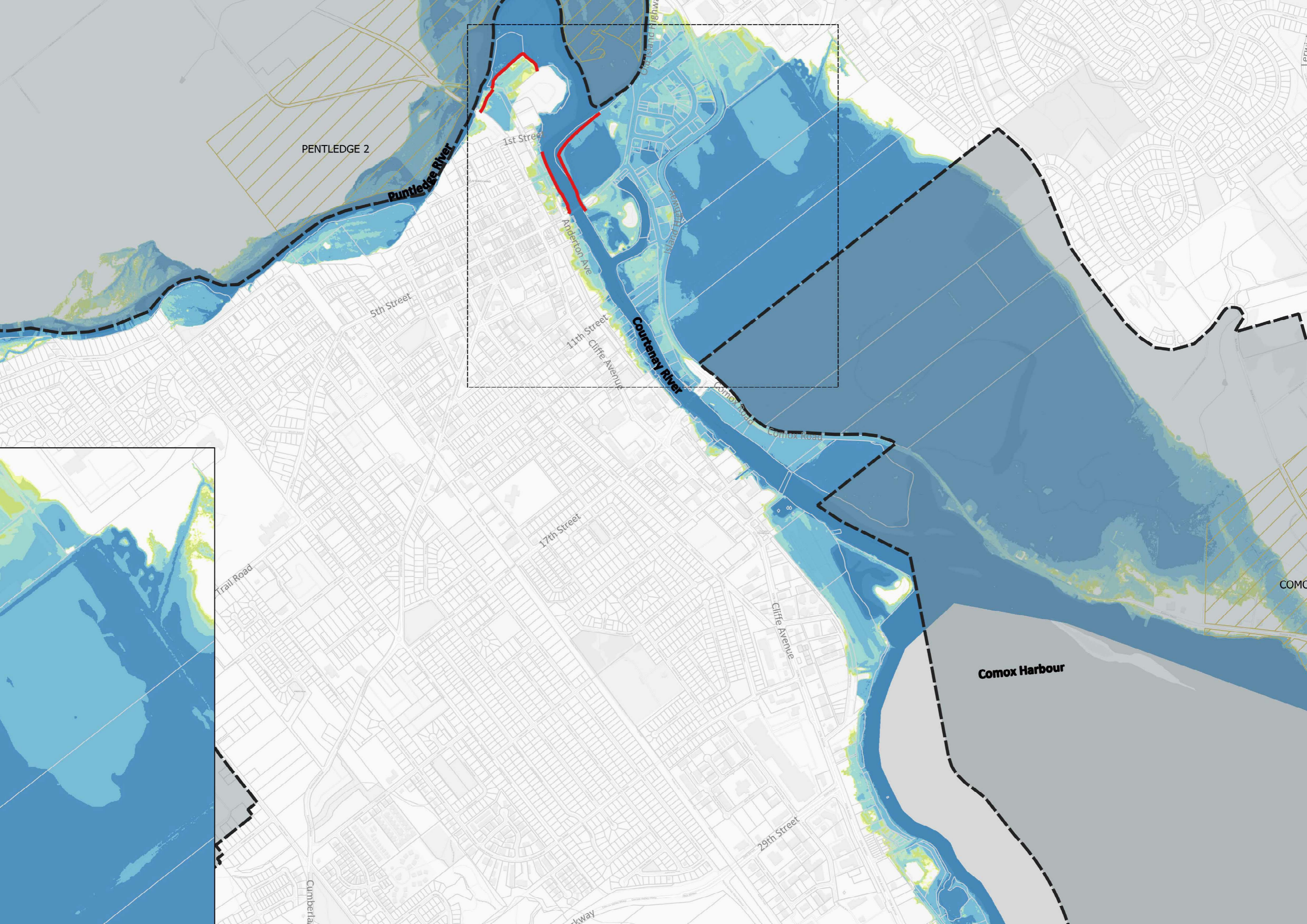
**City of
Courtenay**

Flood Management Plan Appendix C – Hazard & Consequence Map Atlas



Series	Hazard Layer	Exposure Layer
S1-1	Present-day - Likely Event	-
S1-2	Mid-term Future - Less Likely Event	-
S1-3	Long-term Future - Rare Event	-
S2-1	Present-day - Likely Event	Affected People
S2-2	Mid-term Future - Less Likely Event	Affected People
S3-1	Present-day - Likely Event	Critical Infrastructure
S3-2	Mid-term Future - Less Likely Event	Critical Infrastructure
S4-1	Present-day - Likely Event	Culture & Recreation
S4-2	Mid-term Future - Less Likely Event	Culture & Recreation
S5-1	Present-day - Likely Event	Economy
S5-2	Mid-term Future - Less Likely Event	Economy
S6-1	Present-day - Likely Event	Environment
S6-2	Mid-term Future - Less Likely Event	Environment





PENTLEDGE 2

Puntledge River

1st Street

Anderson Ave

5th Street

11th Street

Cliffe Avenue

Courtenay River

Comox Road

17th Street

Comox Road

Trail Road

Cliffe Avenue

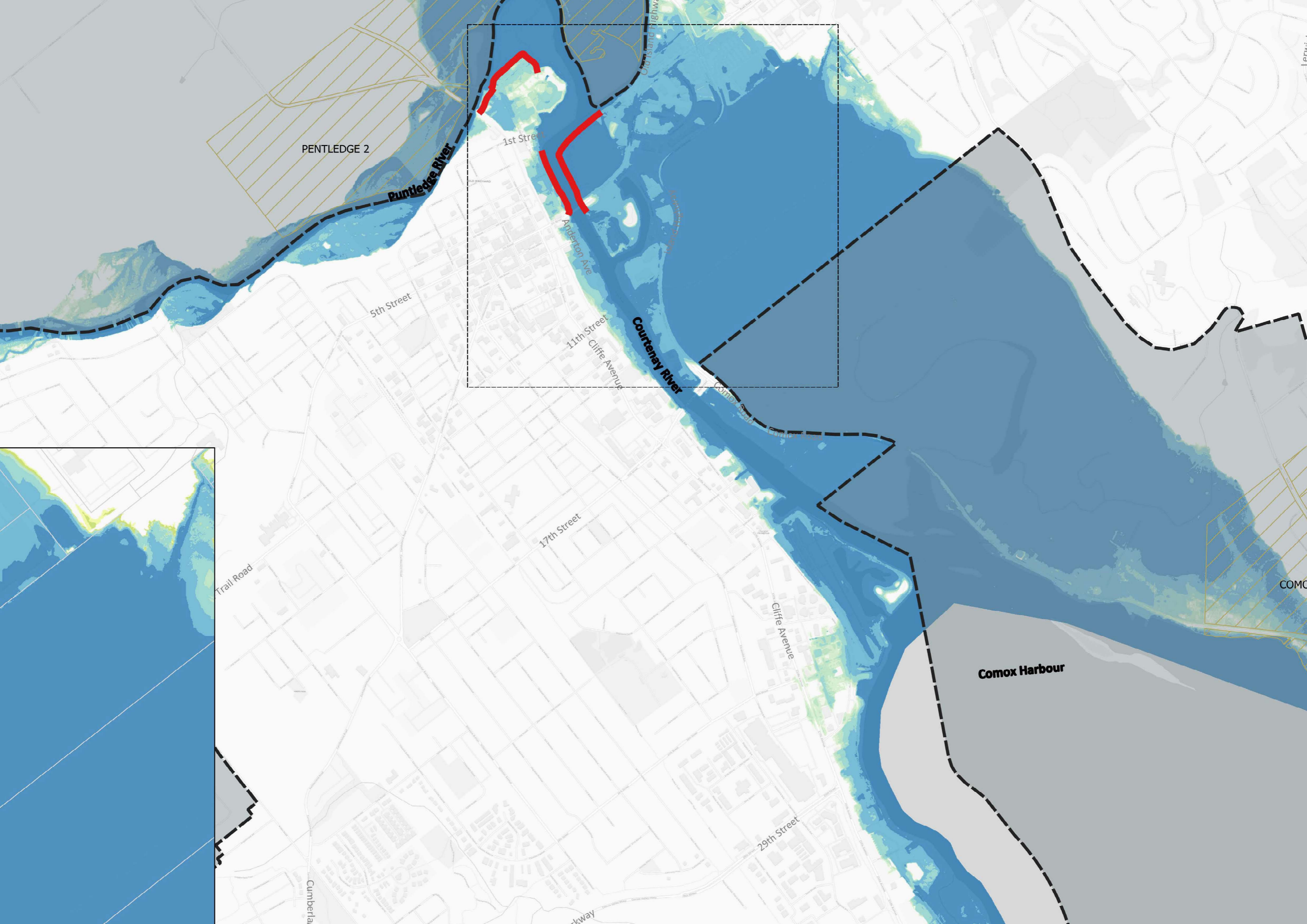
Comox Harbour

29th Street

Comberland

Highway

COMO



PENTLEDGE 2

Courtenay River

1st Street

5th Street

Anderson Ave

11th Street

Cliffe Avenue

Courtenay River

17th Street

Cliffe Avenue

Comox Harbour

29th Street

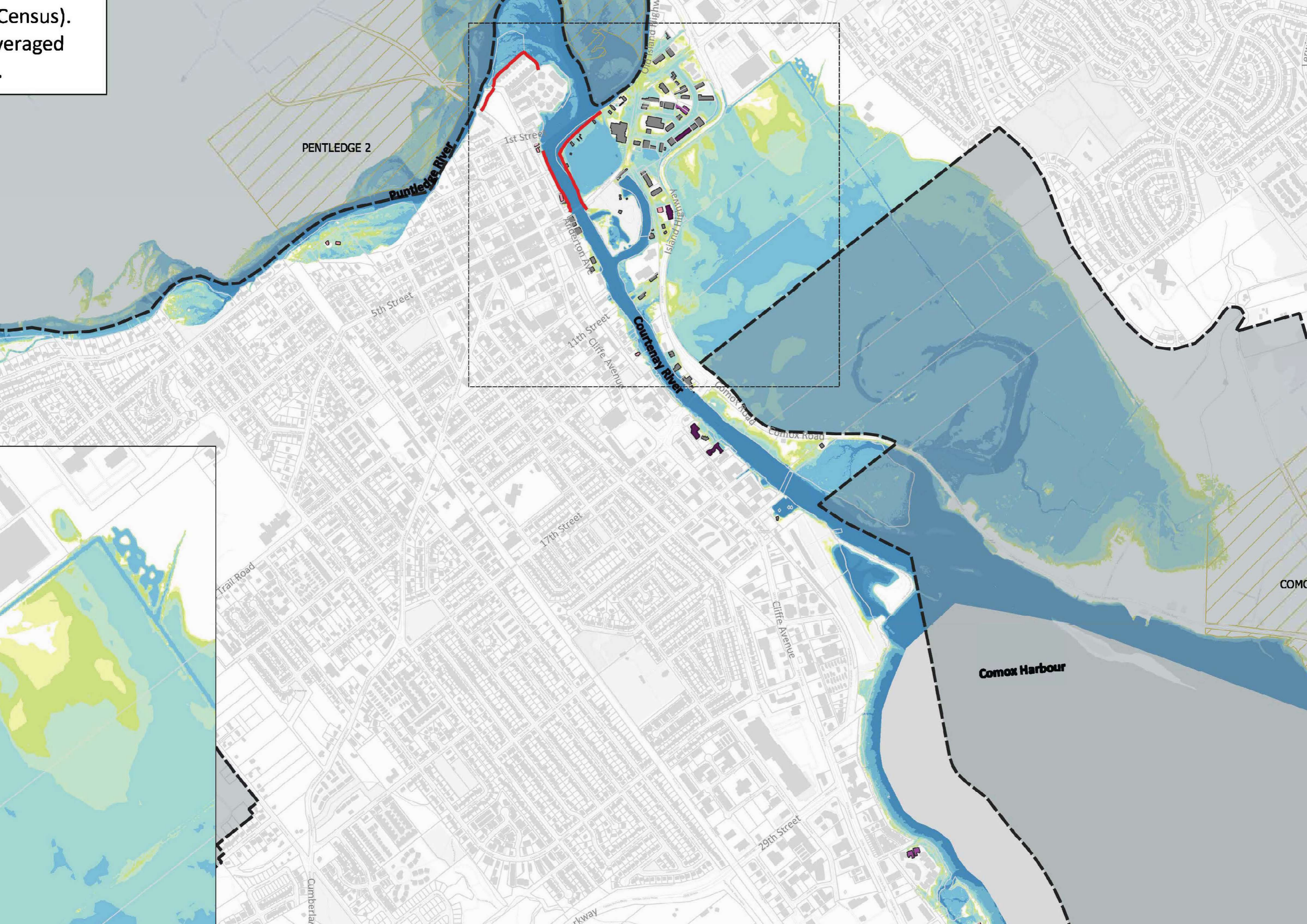
Trail Road

Cumberland

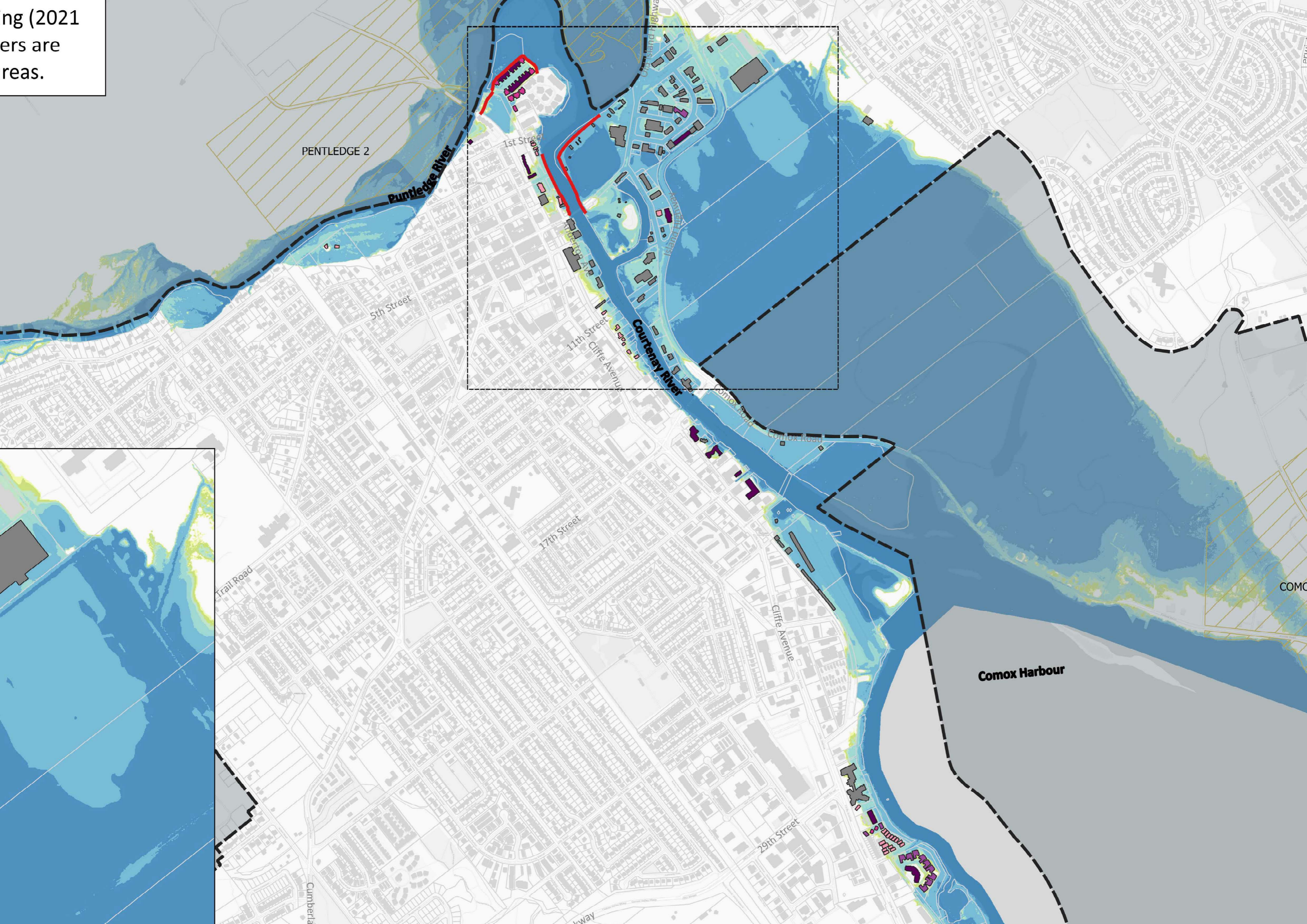
Highway

COMOX

Census).
Covered



ing (2021
ers are
reas.



PENTLEDGE 2

Puntledge River

1st Street

5th Street

11th Street

Cliffe Avenue

Courtenay River

Courtenay Road

17th Street

Cliffe Avenue

Comox Harbour

29th Street

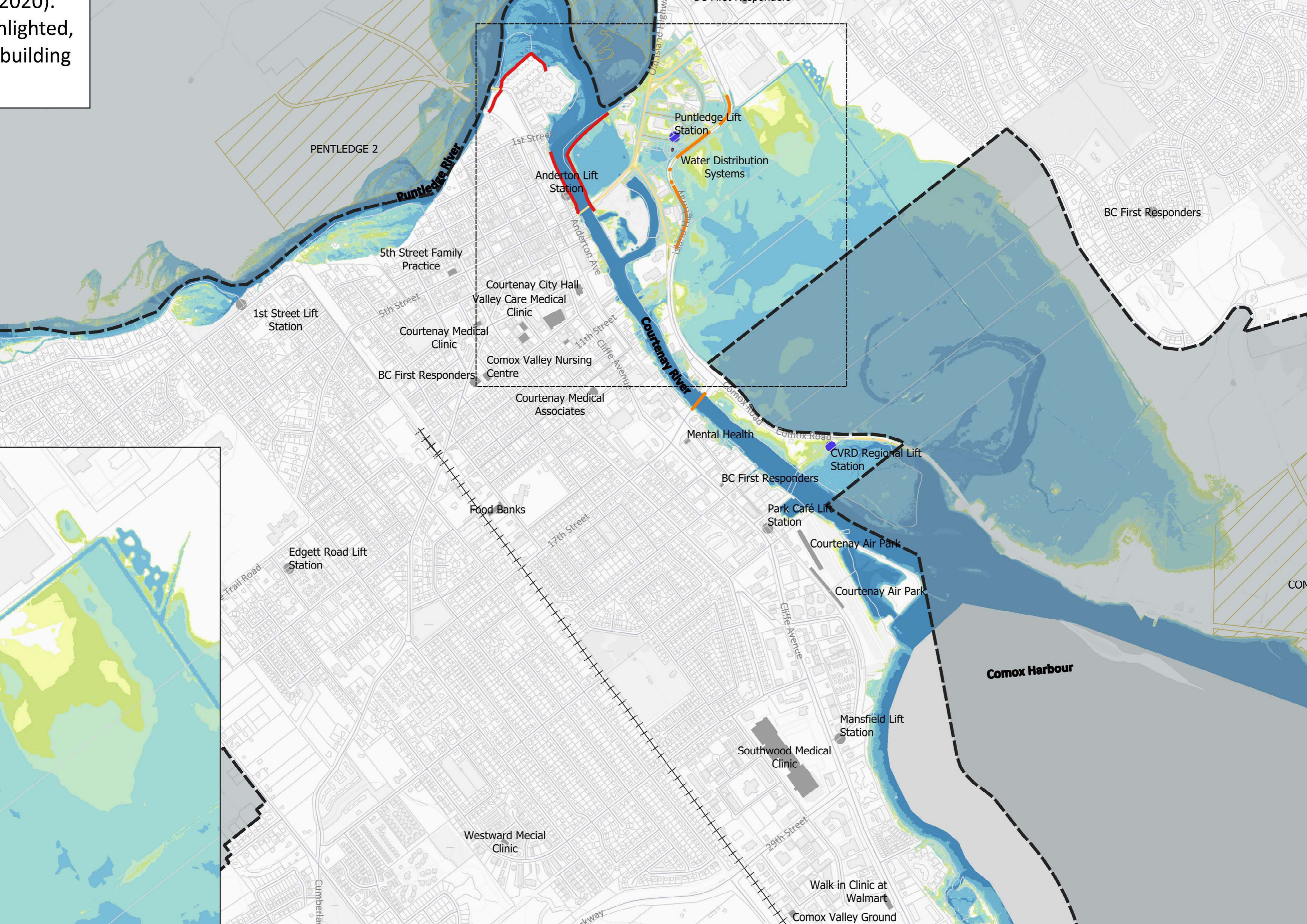
Trail Road

Cumberland

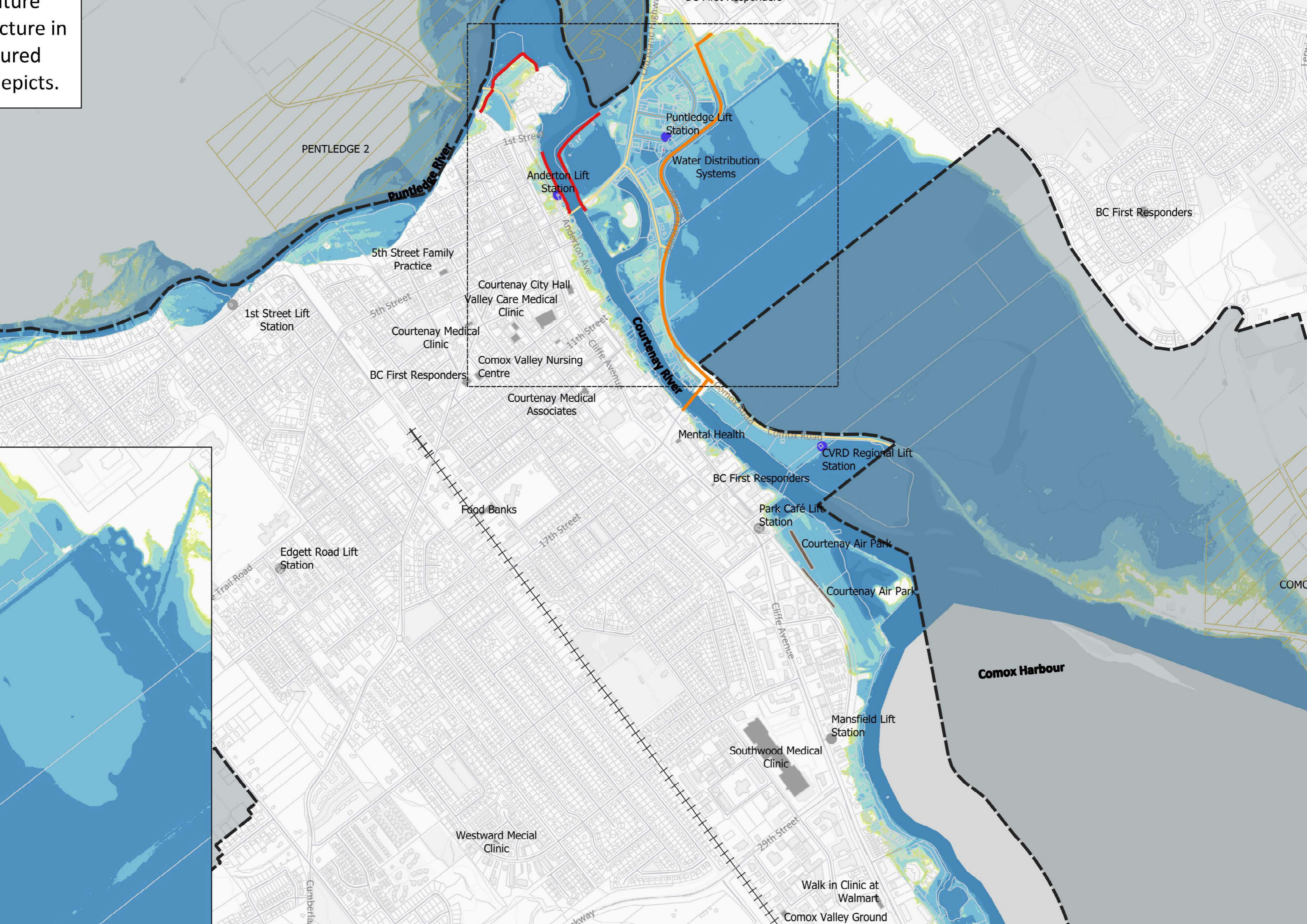
Highway

COMO

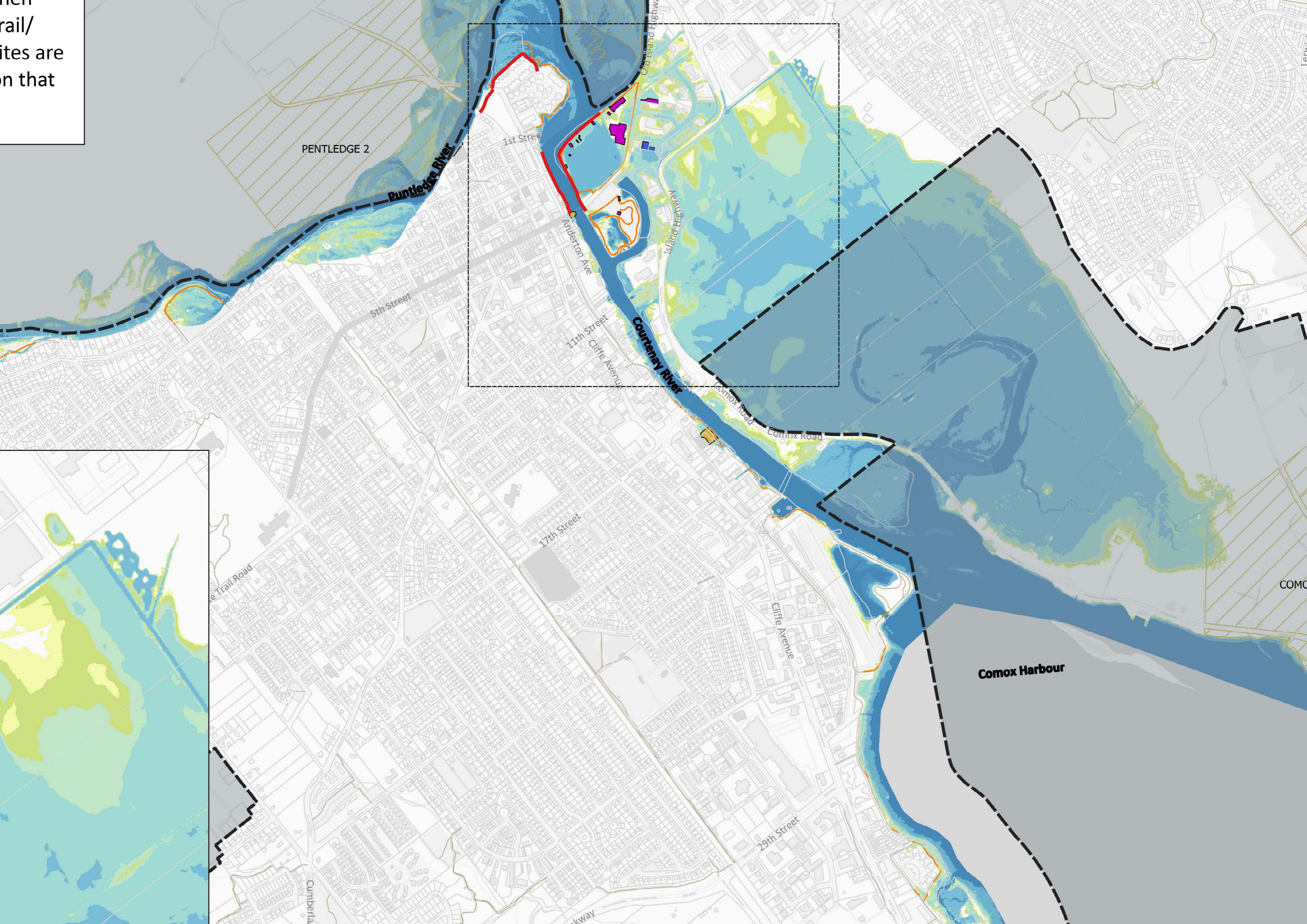
2020).
highlighted,
building



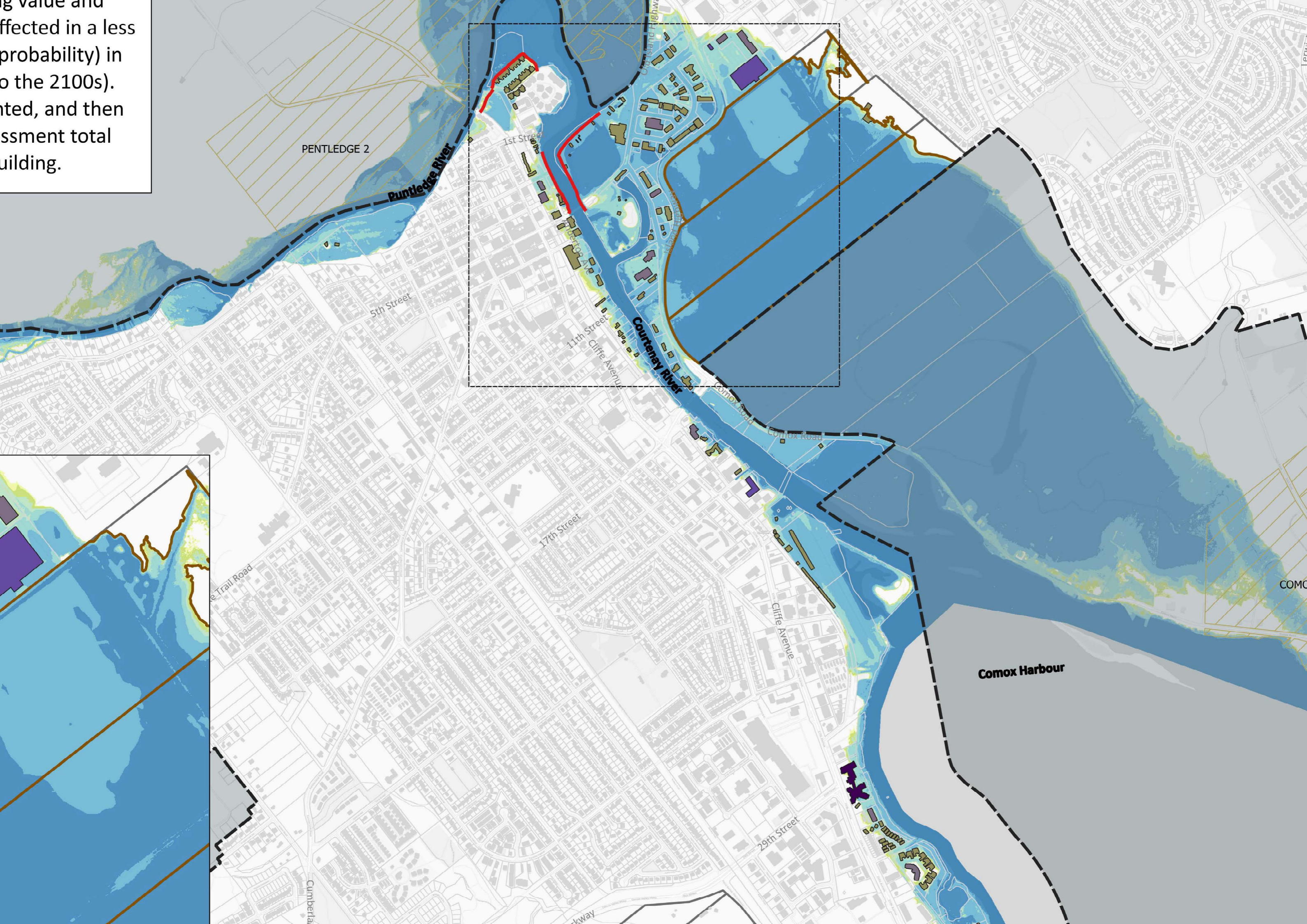
ure
cture in
ured
epicts.



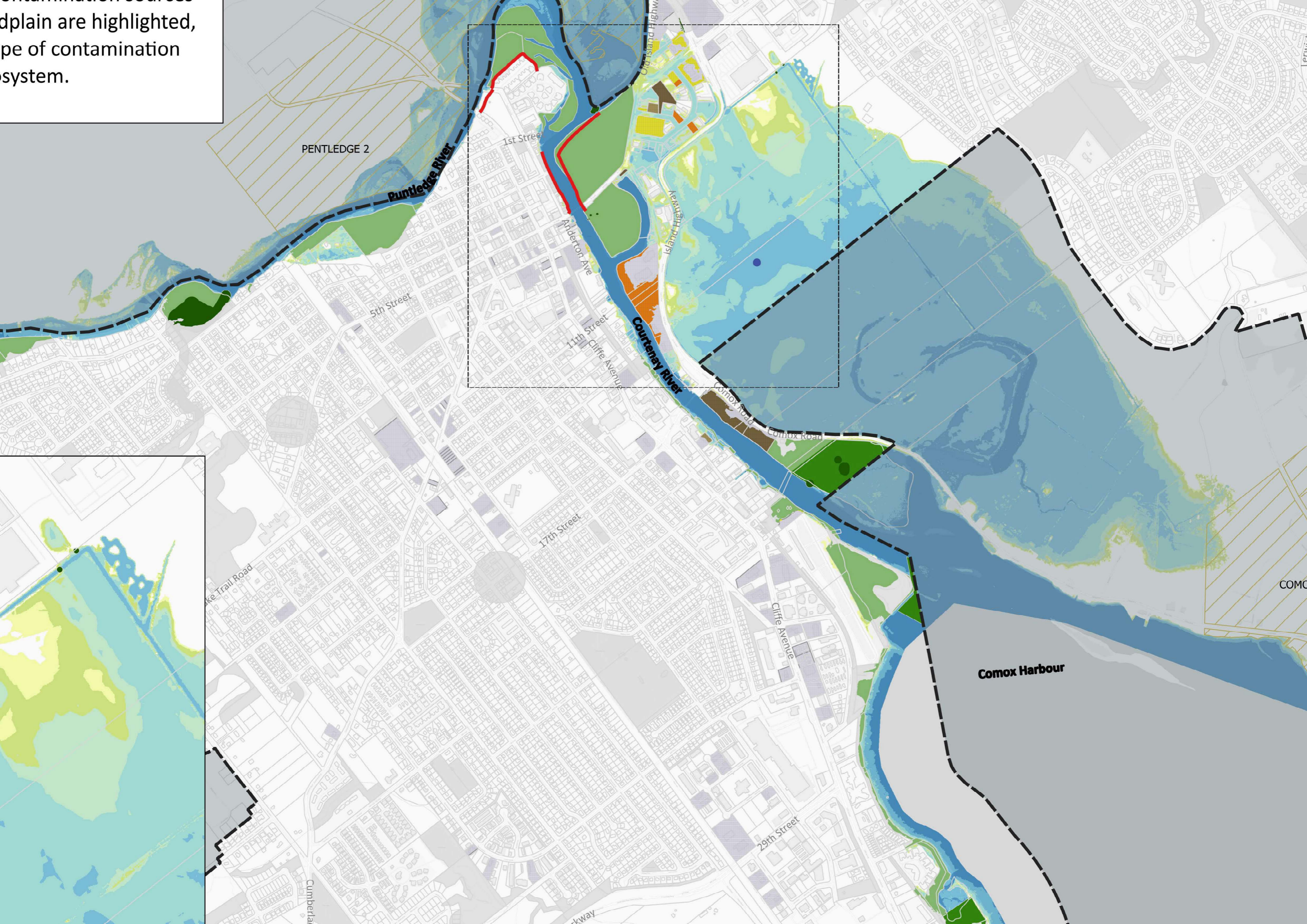
Trail/
sites are
on that



g value and
ected in a less
probability) in
o the 2100s).
nted, and then
ssment total
uilding.



...plains are highlighted,
...pe of contamination
...system.



...sensitive ecosystems in
...then coloured based on
...sensitive ecosystem.

