



City of
Courtenay

ZOOM Window Space

Snow & Ice Control City of Courtenay

Presented by:
Chris Thompson, Manager of Public Works Services
Stu Carmichael, Manager of Parks Services
City of Courtenay
November 13, 2024



Snow & Ice Control Program

ZOOM Window Space

Program Overview

- Maintain a safe transportation network.
- Meet legislative requirements in addition to Council's LOS
- Prevent the accumulation of snow and remove it quickly.

Snow and Ice control along provincial highways is managed by MoTI and their contracted services.



Assets

Existing:

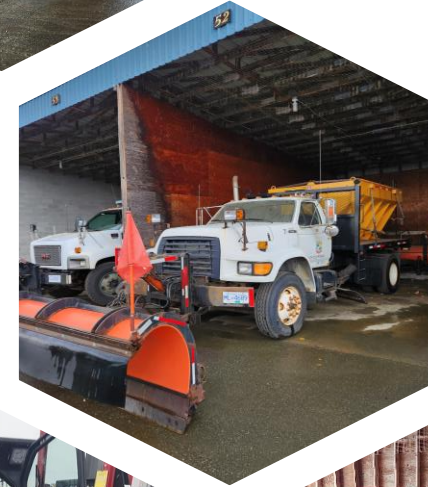
- Heavy Equipment: 14 Units
- Medium Equipment: 2 Units
- Small Equipment: 10 Units
- Salt and Sand Spreaders: 8 Units
- Truck Mounted Brine Units: 2 Units

New for 2024:

- 1 Mini Skid Steer (sidewalks / bike lanes)

Awaiting Delivery:

- 1 Medium Duty Plow Unit



ZOOM Window Space

When to Salt and Plow

ZOOM Window Space

Asset Class	When does the City start to apply product (brine, or salt, or sand)?	How many hours does it take to apply product each round?*	When does the City start plowing?	How many hours does it take to plow each round?*	Required Outcome
Arterial roads	Before snow accumulates if temps are forecasted below 0°C without rain	3 hours (4 fleet vehicles)	Based on road conditions. Typically 2.5cm of snow accumulation	6-8 hours (6 fleet vehicles)	Bare pavement or centre bare
Major roads, transit routes and streets with hills	Before snow accumulates if temps are forecasted below 0°C without rain	3 hours (4 fleet vehicles)	Based on road conditions. Typically 2.5cm of snow accumulation	6-8 hours (6 fleet vehicles)	Bare pavement or centre bare
Local roads	By request	n/a	10cm of snow accumulation	14-20 hours (12 fleet vehicles)	Passable
Cul-de-sacs and lanes	By request	n/a	10cm of snow accumulation	24-36 hours from end of snowfall	Passable
Sidewalks	Before snow accumulates if temps are forecasted below 0°C without rain (DCBIA only)	3 hours	5cm if more than 10cm of snow accumulation is forecasted	48 hours from end of snowfall	Passable
Paved trails & paved multi-use paths	Before snow accumulates if temps are forecasted below 0°C without rain	3 hours	5cm if more than 10cm of snow accumulation is forecasted	48 hours from end of snowfall	Passable
Separated cycle tracks	Before snow accumulates if temps are forecasted below 0°C without rain	3 hours	5cm if more than 10cm of snow accumulation is forecasted	24 hours from end of snowfall	Bare pavement
Civic properties and public facilities	Before snow accumulates if temps are forecasted below 0°C without rain	3 hours	5cm if more than 10cm of snow accumulation is forecasted	24 hours from end of snowfall	Passable
Parking lots	Before snow accumulates if temps are forecasted below 0°C without rain	3 hours	5cm of snow accumulation	12 hours (2 fleet vehicles)	Bare pavement

*It may take multiple rounds to clear a road due to ongoing snowfall.

Road Clearing

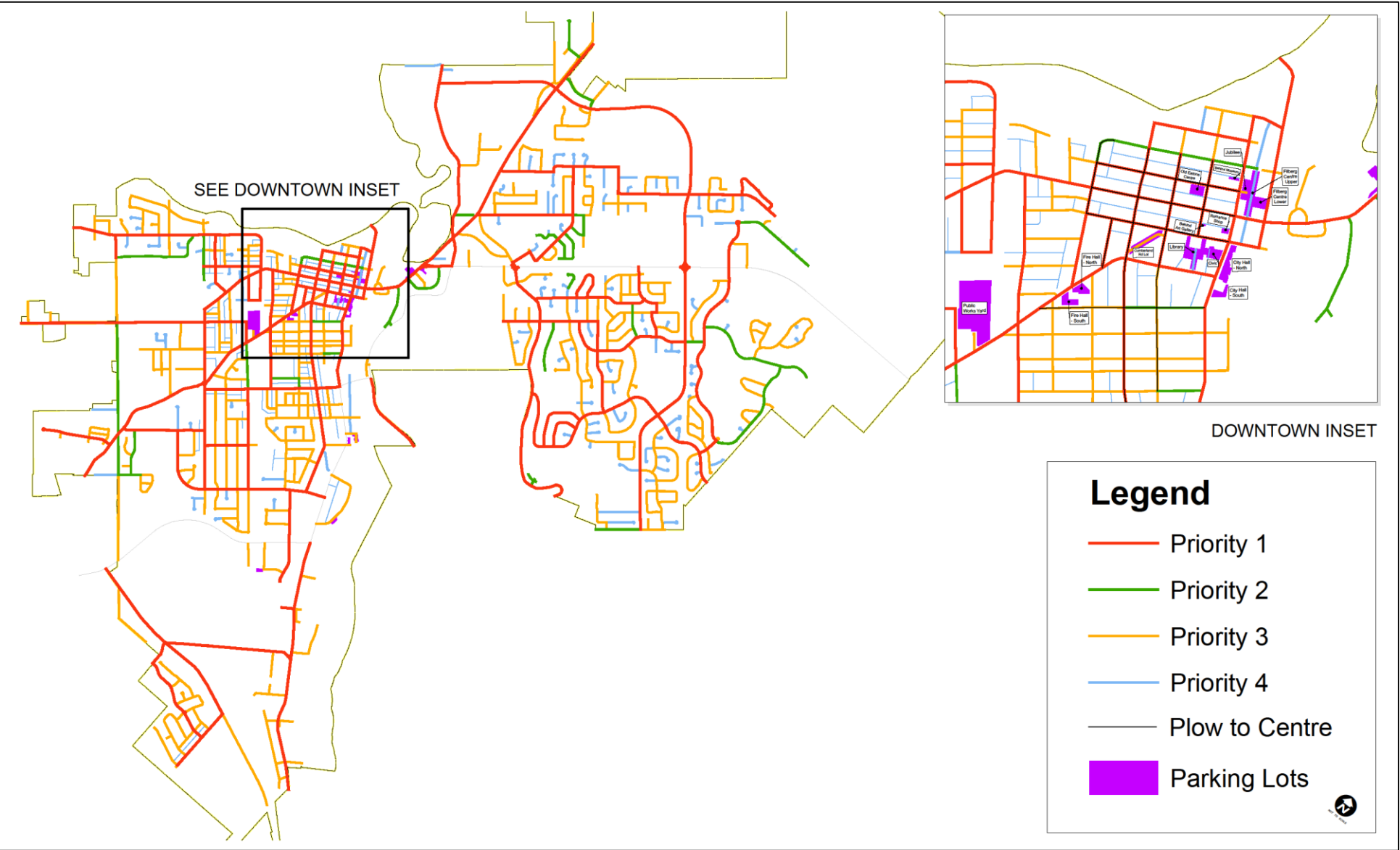
ZOOM Window Space

The City clears snow from roads in order of priority:

- Arterial and major collector roads, emergency services facilities, bus routes and the downtown core commercial area;
- Minor collector roads, streets with steep hills, and school zones;
- Local roads;
- Cul-de-sacs and lanes

Road Clearing Map

ZOOM Window Space



Sidewalk and Walkway Clearing

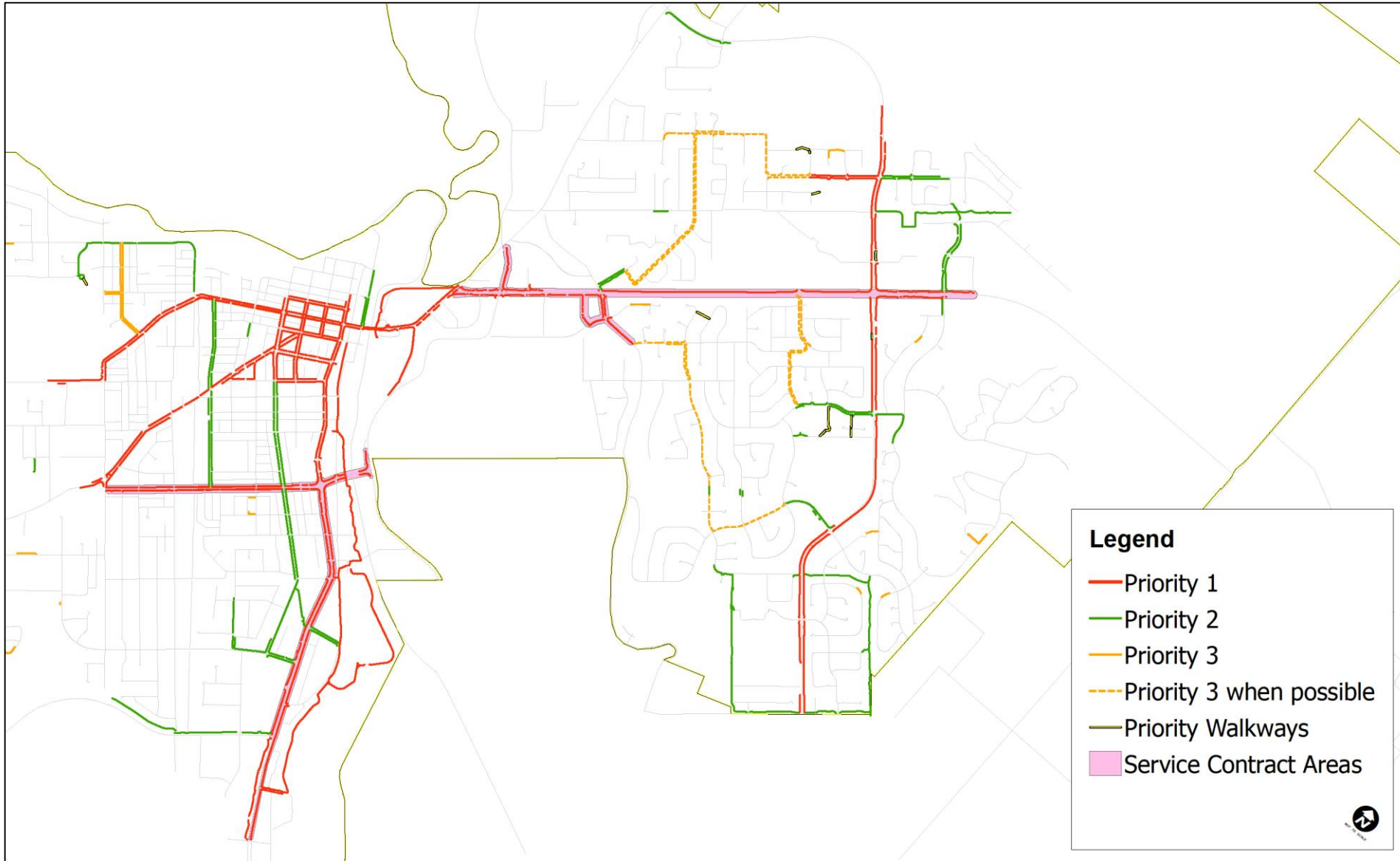
ZOOM Window Space

High volume active transportation routes are cleared where mechanical clearing is possible:

- Arterial roads;
 - Downtown core;
 - Park frontages;
 - Transit areas;
 - Sidewalks adjacent to municipal facilities;
 - Separated bike lanes and prioritized paved walking trails.
-
- Snow is also cleared from sidewalks on collector roads without residential homes where mechanical clearing is possible as well as separated bike lanes.

Sidewalk Clearing Map

ZOOM Window Space



Snow and Ice Control Video

ZOOM Window Space